



RoHS Compliant

## Features

- Switching capacity up to 20A
- Small size and light weight
- Suitable for automobile and lamp accessories

## Contact Data

Contact Arrangement	1A = SPST N.O.	Maximum Switching Power	280W
Contact Rating	20A @ 14VDC N.O.	Maximum Switching Voltage	75VDC
Contact Resistance	< 50 milliohms initial	Maximum Switching Current	20A
Contact Material	AgSnO <sub>2</sub>		

## Coil Data

Coil Voltage VDC		Coil Resistance Ω +/- 10%	Pick Up Voltage VDC (max) 75% of rated voltage	Release Voltage VDC (min) 10% of rated voltage	Coil Power W	Operate Time ms	Release Time ms
Rated	Max						
12	15.6	0.96W 150	9.0	1.2	0.96	≤10	≤5

## General Data

Electrical Life @ rated load	100K cycles, typical
Mechanical Life	10M cycles, typical
Insulation Resistance	100M Ω min. @ 500VDC
Dielectric Strength, Coil to Contact	750V rms min. @ sea level
Contact to Contact	500V rms min. @ sea level
Shock Resistance	98m/s <sup>2</sup> for 11 ms
Vibration Resistance	1.5mm double amplitude 10~55Hz
Operating Temperature	-40°C to +85°C
Storage Temperature	-40°C to +85°C
Solderability	260°C for 5 s
Weight	13g

### Caution

1. The use of any coil voltage less than the rated coil voltage may compromise the operation of the relay.
2. Pickup and release voltages are for test purposes only and are not to be used as design criteria.

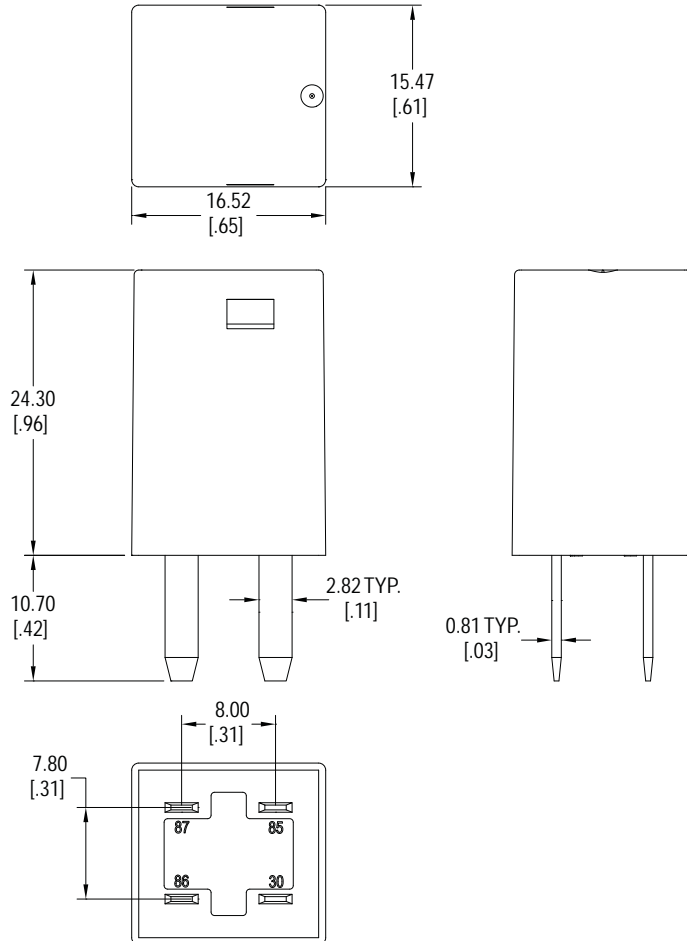
# A17

## Ordering Information

1. Series	A17	1A	S	12VDC	.96
A17					
2. Contact Arrangement	1A = SPST N.O.				
3. Sealing Option					
S = Sealed					
4. Coil Voltage					
12VDC					
5. Coil Power					
.96 = .96W					
6. Coil Suppression					
Blank = Standard					
R = Resistor (1100Ω for 12VDC)					
D = Diode (1N405) Cathode on "86" terminal					

## Dimensions

Units = mm



## Schematic & PC Layout

Bottom Views

